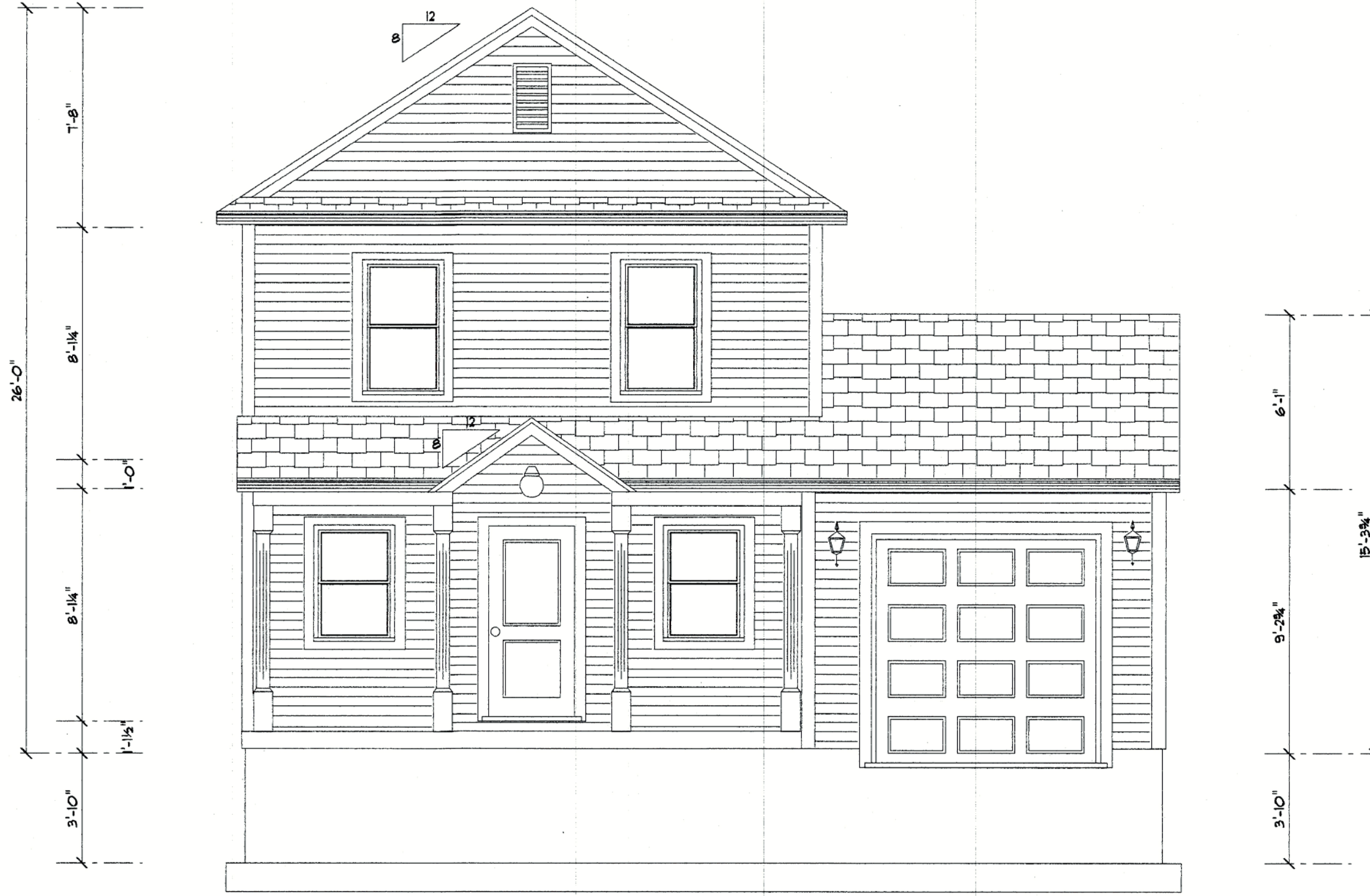


All Construction To  
Meet Or Exceed :

- 2018 SBC
- Model Codes
- 2015 IBC
- 2015 IEBC
- 2015 IRC
- 2015 IMC
- 2015 IRC
- 2015 IECC
- 2017 NEC [NFPA 70]
- 2009 ICC A117.1 AUBF



FRONT ELEVATION

Drawn For:  
Patrick Snow  
Premier Real Estate Services of CT, LLC  
110 Court Street Suite One  
Cromwell CT, 06416  
Phone 860-632-7090 ext 3  
Fax 860-394-4001

MODEL #1 Date: 12/17/2020

THE BERLIN BUNGALOWS

1676 BERLIN TURNPIKE

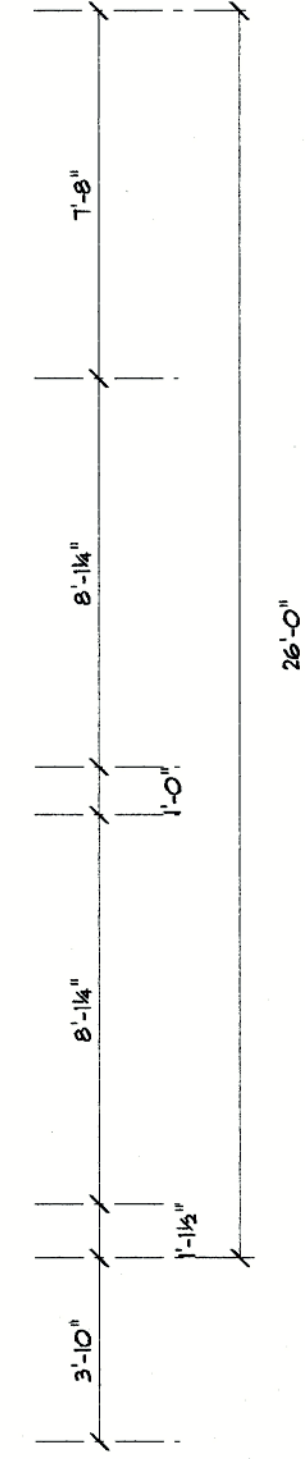
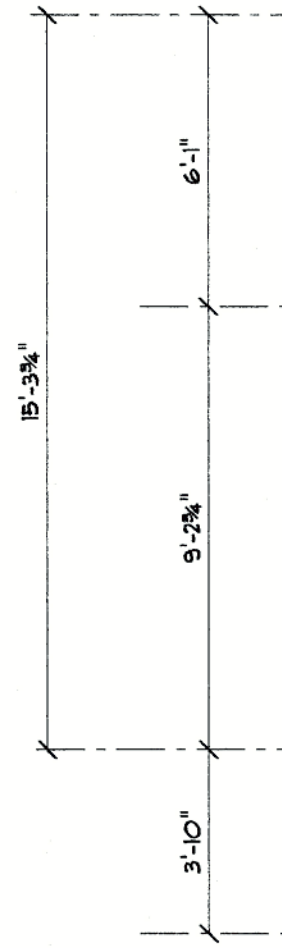
BERLIN CT. 06037

A-1



All Construction Too  
Meet Or Exceed :

- 2018 SBC
- Model Codes
- 2015 IBC
- 2015 IEBC
- 2015 IPC
- 2015 IMC
- 2015 IRC
- 2015 IECC
- 2017 NEC (NFPA 70)
- 2009 ICC A117.1 AUBF



REAR ELEVATION

Drawn For:

Patrick Snow  
Premier Real Estate Services of CT, LLC  
110 Court Street Suite One  
Cromwell CT, 06416  
Phone 860-632-1090 ext 3  
Fax 860-394-4001

MODEL #1

Date: 12/1/2021

THE BERLIN BUNGALOWS

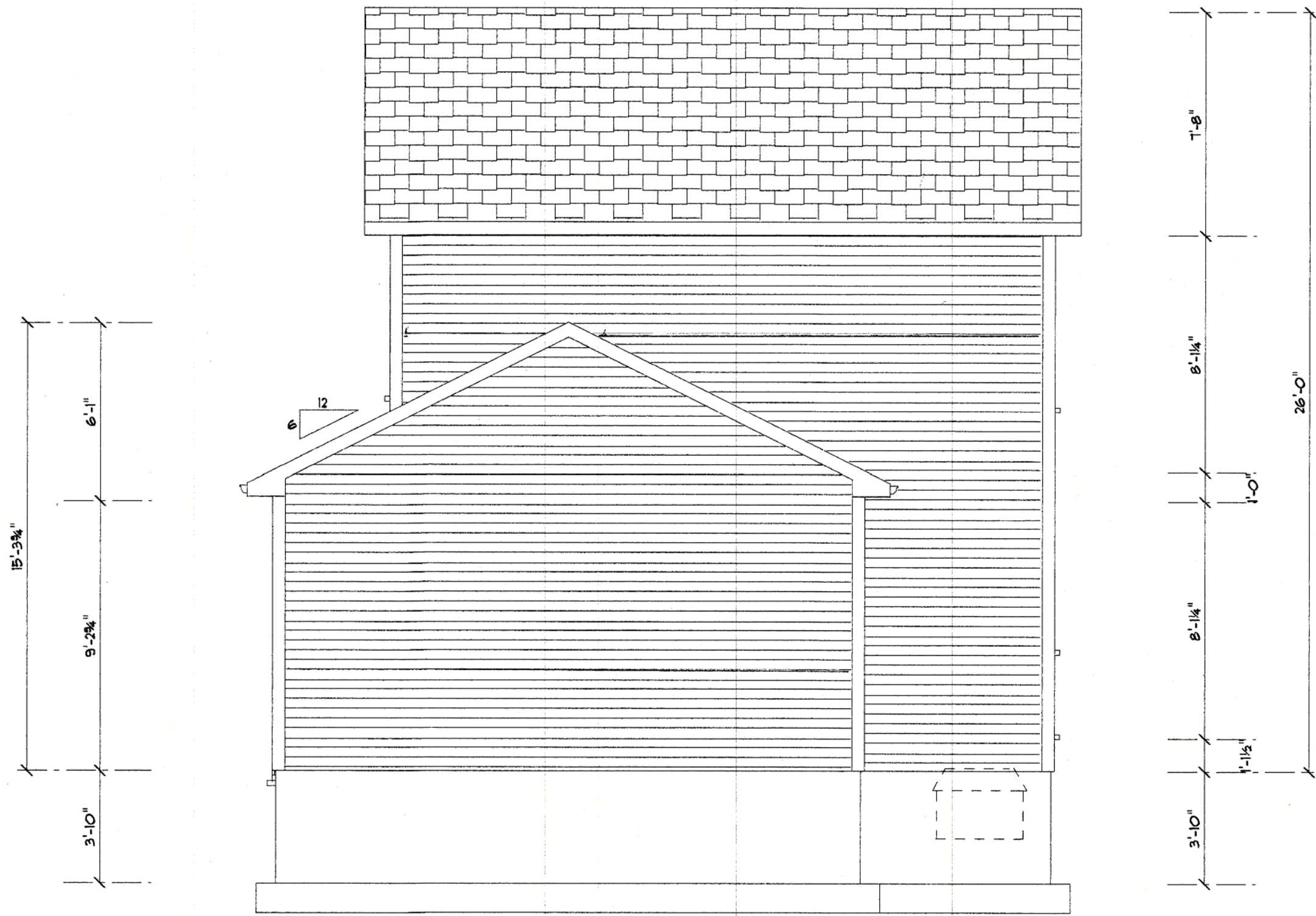
1676 BERLIN TURNPIKE

BERLIN CT, 06037

A-2

All Construction To  
Meet Or Exceed :

- 2018 SBC
- Model Codes
- 2015 IBC
- 2015 IEBC
- 2015 IPC
- 2015 IMC
- 2015 IRC
- 2015 IECC
- 2017 NEC (NFPA 70)
- 2009 ICC A117.1 AUBF



RIGHT ELEVATION

A-3

THE BERLIN BUNGALOWS

1676 BERLIN TURNPIKE

BERLIN CT. 06037

Drawn For:  
Patrick Snow  
Premier Real Estate Services of CT, LLC  
110 Court Street Suite One  
Cromwell CT. 06416  
Phone 860-632-7090 ext 3  
Fax 860-394-4001

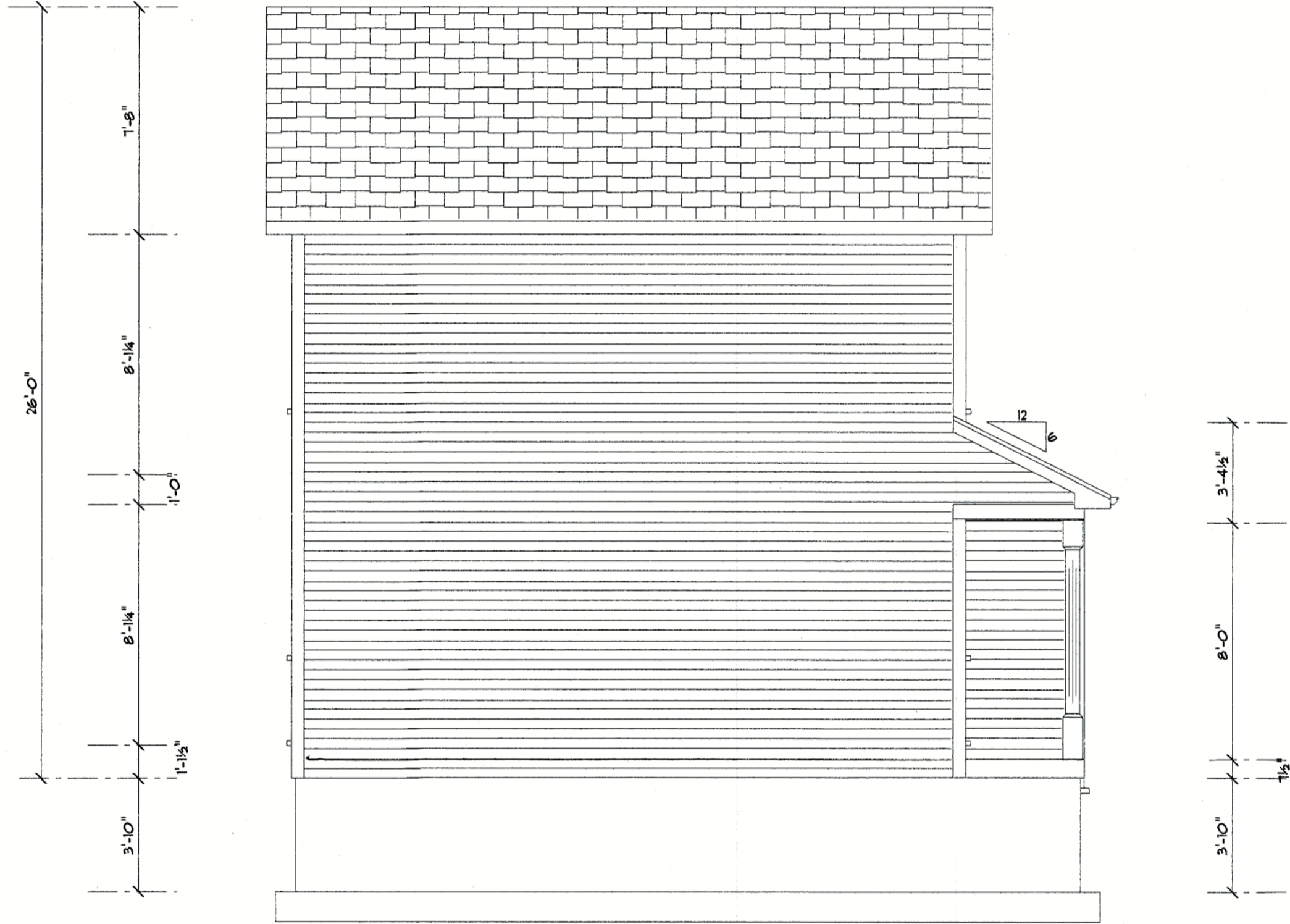
MODEL #1

Date: 12/1/2020



All Construction To  
Meet Or Exceed :

- 2018 SBC
- Model Codes
- 2015 IBC
- 2015 IEBC
- 2015 IPC
- 2015 IMC
- 2015 IRC
- 2015 IECC
- 2011 NEC NFPA 701
- 2009 ICC A117.1 AUBF



LEFT ELEVATION

**A-4**

THE BERLIN BUNGALOWS

1676 BERLIN TURNPIKE

BERLIN CT. 06037

Drawn For:

Patrick Snow  
Premier Real Estate Services of CT, LLC  
110 Court Street Suite One  
Cromwell CT. 06416  
Phone 860-632-1090 ext 3  
Fax 860-394-4001

MODEL #1





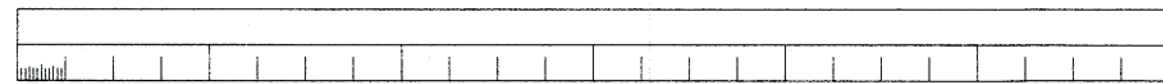
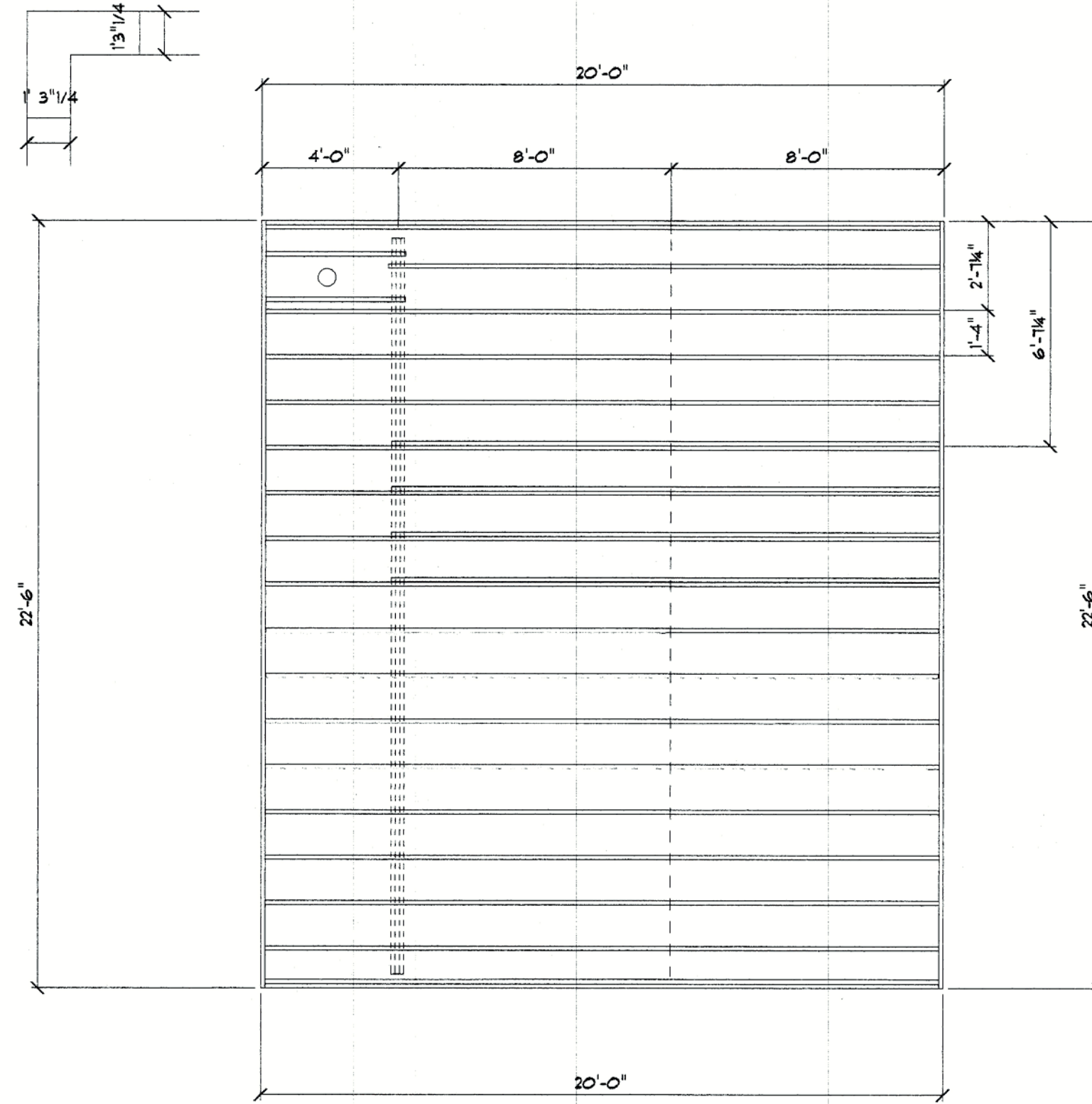
All Construction Too  
Meet Or Exceed :

- 2018 SBC
- Model Codes
- 2015 IBC
- 2015 IEBC
- 2015 IPC
- 2015 IMC
- 2015 IRC
- 2015 IECC
- 2017 NEC (NFPA 70)
- 2009 ICC A117.1 AUEF

NOTES

TYPICAL 2x10 FLOOR SYSTEM:  
3/4" T&G PLYWOOD SUBFLOOR  
GLUED & NAILED  
2x10 FLOOR JOISTS @ 16" o.c. w/  
1x3 CROSS BRIDGING  
3x2x10 DF BEAM BELOW

DBL BOX FRONT & REAR  
DBL JOIST UNDER ISLAND  
MOVE JOIST FOR ALL DROPS  
BLOCKING ON BEAM



1ST FLOOR/JOIST FRAMING

Drawn For:  
Patrick Snow  
Premier Real Estate Services of CT, LLC  
110 Court Street Suite One  
Cromwell CT, 06416  
Phone 860-632-7090 ext 3  
Fax 860-394-4001

THE BERLIN BUNGALOWS

1676 BERLIN TURNPIKE

BERLIN CT. 06037

MODEL #1 & #2

A-J.F

All Construction To  
Meet Or Exceed :

2018 SBC  
Model Codes  
2015 IBC  
2015 IEBC  
2015 IPC  
2015 IMC  
2015 IRC  
2015 IECC  
2011 NEC (NFPA 70)  
2009 ICC A117.1 AUBF

WINDOW SCHEDULE

- 2'8" x 3'10" DOUBLE HUNG TEMP =1
- 2'8" x 3'10" DOUBLE HUNG =1
- 2'6" x 3'6" CASEMENT =1

EXTERIOR DOOR SCHEDULE

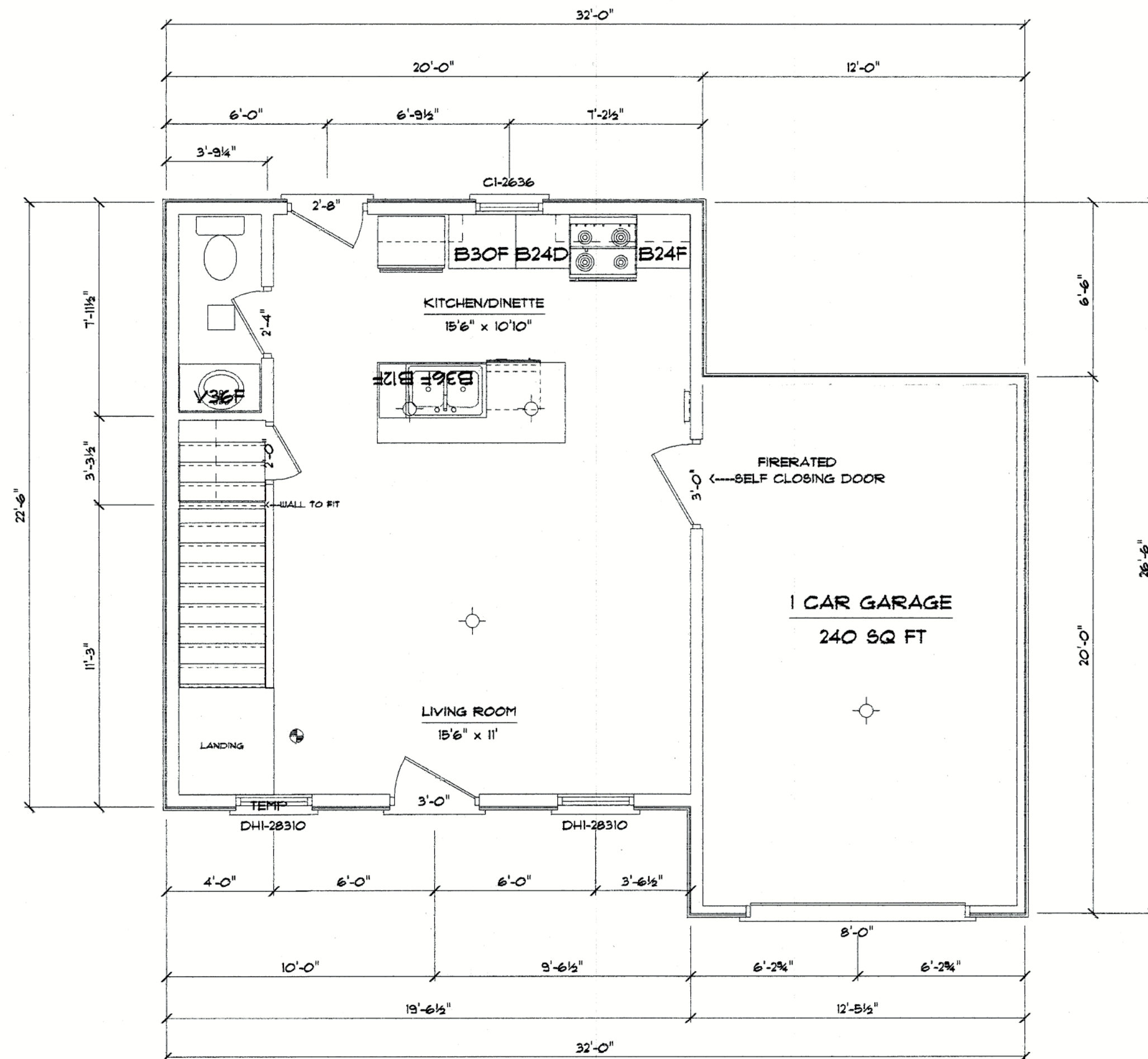
- 3'0" x 6'8" RIGHT IN/SWING =1
- 2'8" x 6'8" RIGHT IN/SWING =1
- 3'0" x 6'8" LEFT IN/SWING  
FIRERATED SELF CLOSING =1

INTERIOR DOOR SCHEDULE

- 2'4" x 6'8" LEFT SWING SOLID 6 =1
- 2'0" x 6'8" LEFT SWING SOLID 6 =1

GARAGE DOOR SCHEDULE

- 8'0" x 8'0" =1



1ST FLOOR PLAN 450 SQ FT

Drawn For:  
Patrick Snow  
Premier Real Estate Services of CT, LLC  
110 Court Street Suite One  
Cromwell CT, 06416  
Phone 860-632-1090 ext 3  
Fax 860-394-4001

MODEL #1

THE BERLIN BUNGALOWS

1676 BERLIN TURNPIKE

BERLIN CT. 06037

A-6



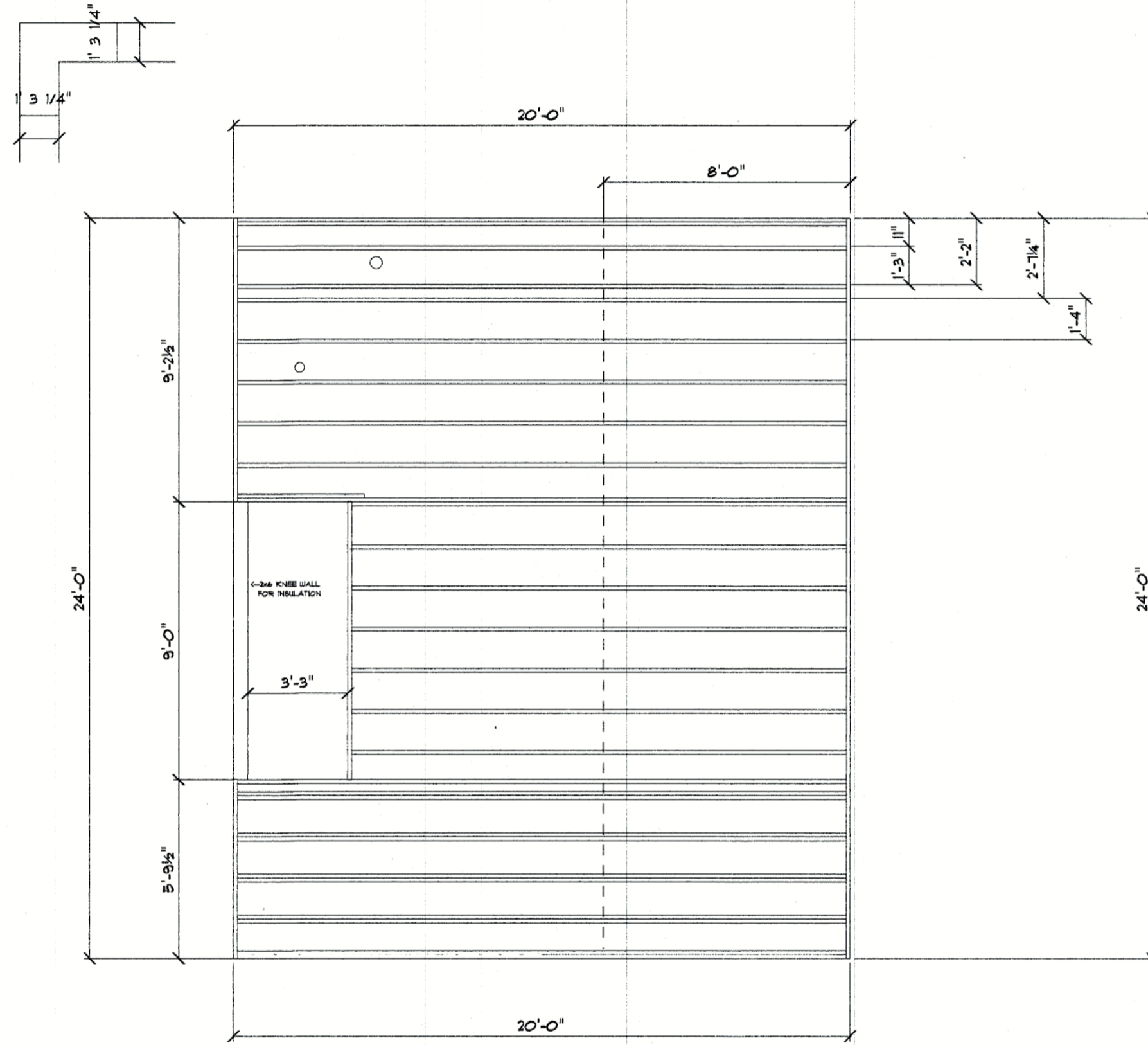
All Construction To  
Meet Or Exceed :

- 2018 SBC
- Model Codes
- 2015 IBC
- 2015 IEBC
- 2015 IPC
- 2015 IMC
- 2015 IRC
- 2015 IECC
- 2017 NEC (NFPA 70)
- 2009 ICC AHJ.1 AUBF

NOTES

TYPICAL 2x10 FLOOR SYSTEM:  
3/4" T&G PLYWOOD SUBFLOOR  
GLUED & NAILED  
2x10 FLOOR JOISTS @ 16" o.c. w/  
1x3 CROSS BRIDGING

DBL BOX FRONT & REAR  
DBL JOIST FRONT 3  
MOVE JOIST FOR ALL DROPS



2ND FLOOR/JOIST FRAMING

Drawn For:  
Patrick Snow

Premier Real Estate Services of CT, LLC  
110 Court Street Suite One  
Cromwell CT, 06416  
Phone 860-632-7090 ext 3  
Fax 860-394-4001

MODEL #1 & #2

THE BERLIN BUNGALOWS

1676 BERLIN TURNPIKE

BERLIN CT. 06037

A-6.FI

All Construction To  
Meet Or Exceed :

- 2018 SBC
- Model Codes
- 2015 IBC
- 2015 IEBC
- 2015 IRC
- 2015 IMC
- 2015 IRC
- 2015 IECC
- 2017 NEC (NFPA 70)
- 2009 ICC A117.1 AUBF

**NOTES**

22.5"x30"  
ATTIC ACCESS

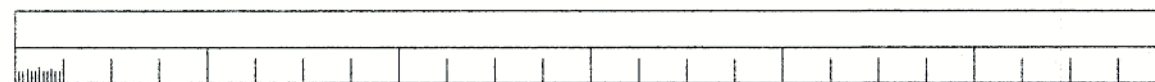
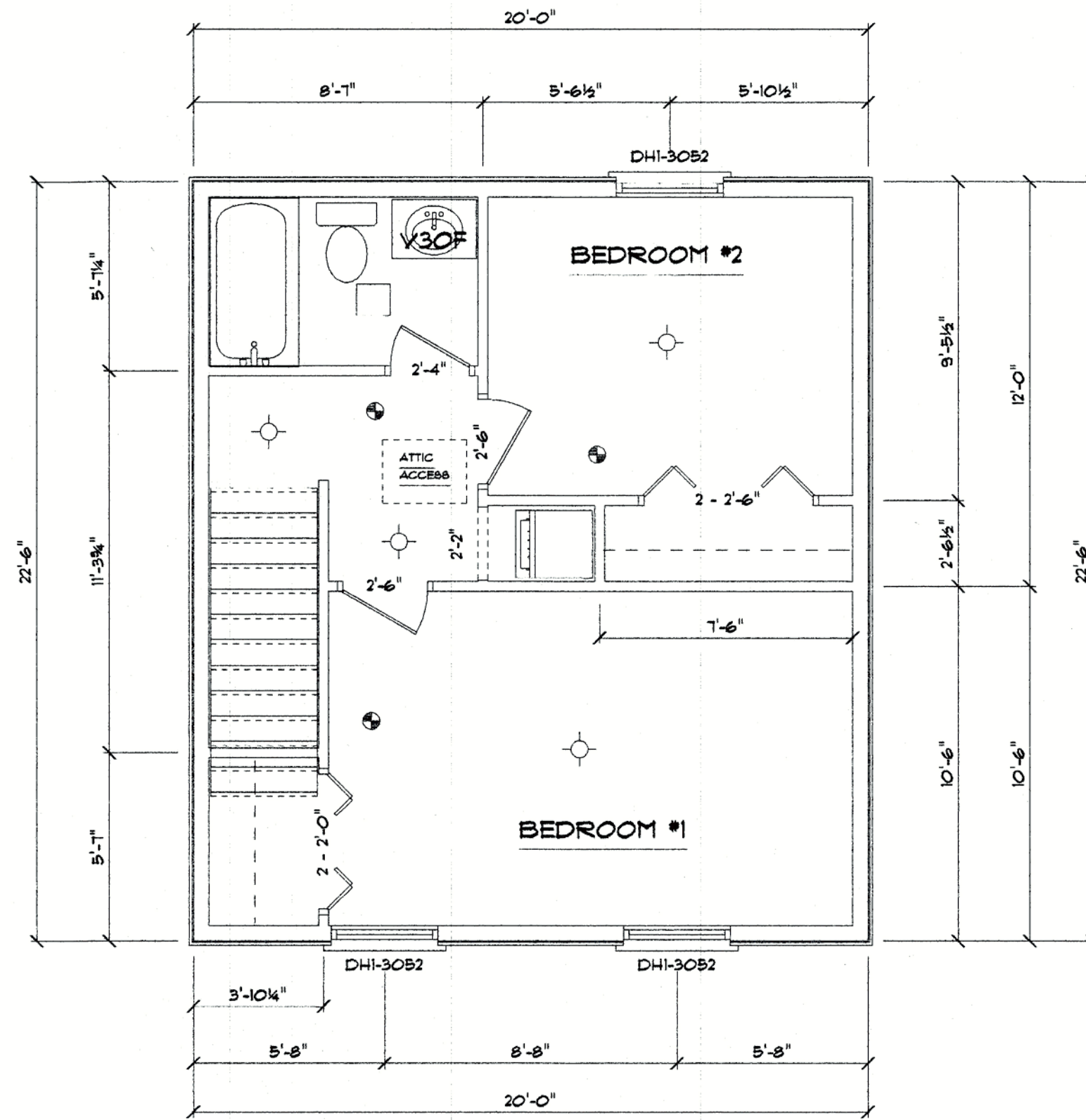
W/D OVERFLOW PAN  
DRAINED TO GARAGE  
FLOOR

**WINDOW SCHEDULE**

3'0" x 5'0" DOUBLE HUNG EGRESS #3

**INTERIOR DOOR SCHEDULE**

- 2'4" x 6'8" RIGHT SWING SOLID 6 #1
- 2'6" x 6'8" RIGHT SWING SOLID 6 #2
- 5'0" x 6'8" RIGHT DBL BI-FOLD SOLID 6 #1
- 4'0" x 6'8" RIGHT DBL BI-FOLD SOLID 6 #1



**2ND FLOOR PLAN 450 SQ.FT**

Drawn For:  
Patrick Snow  
Premier Real Estate Services of CT, LLC  
110 Court Street Suite One  
Cromwell CT, 06416  
Phone 860-632-1090 ext 3  
Fax 860-394-4001

**THE BERLIN BUNGALOWS**

**1676 BERLIN TURNPIKE**

**BERLIN CT. 06037**

**MODEL #1**

**A-1**



